

Opportunities And Challenges For Access to Behavioral Health Care

During the Implementation of the Affordable Care Act

29th Annual Rosalynn Carter Symposium

November 8, 2013

Arthur C. Evans, Commissioner

www.DBHIDS.org

University of Pennsylvania, Faculty





VISION FOR ACCESS



**Universal, Comprehensive, Equitable
Effective, Cost-effective**

The ACA: Access to Care

Individual Mandate

- Individuals must obtain insurance coverage by January 1, 2014 or pay a penalty.

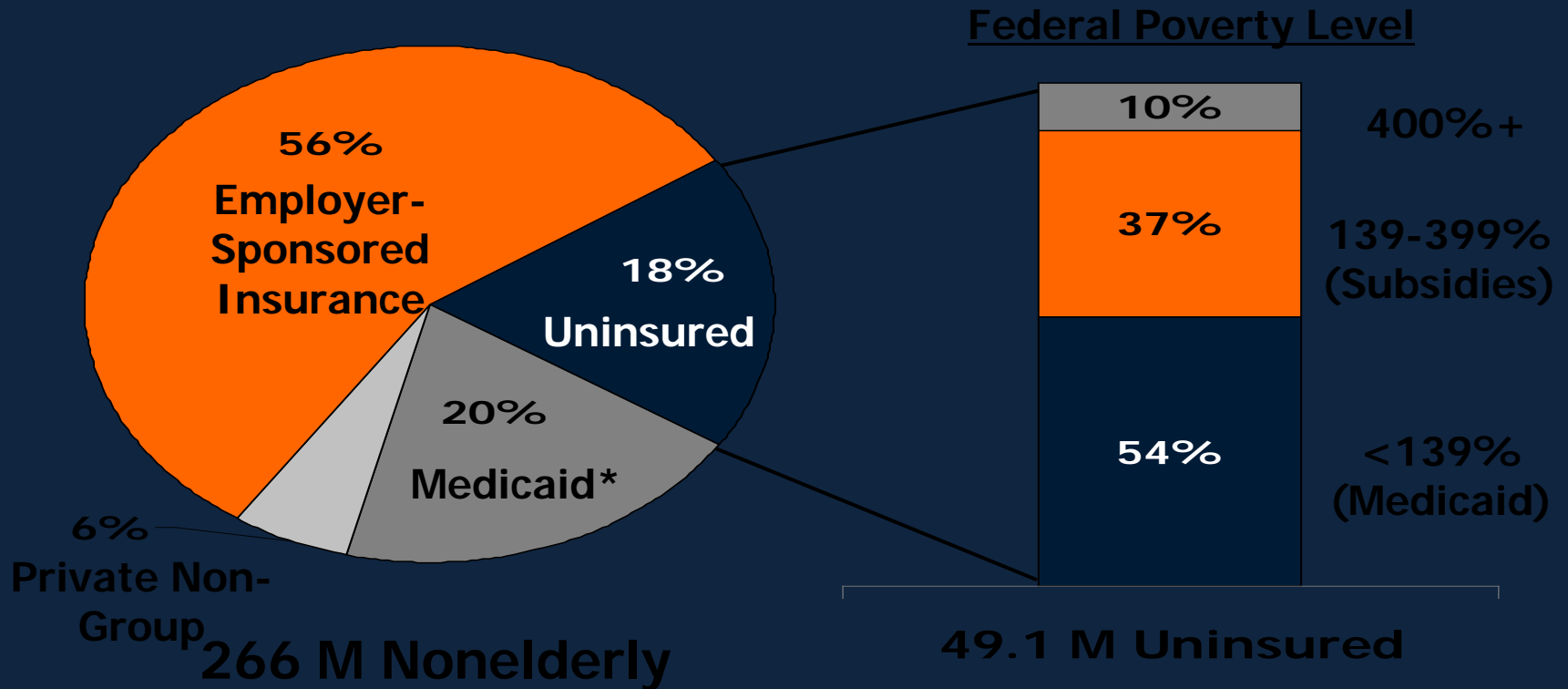
Medicaid Expansion

- States can choose to expand Medicaid eligibility for individuals up to 138% of Federal Poverty Level.

Health Insurance Marketplace

- Individuals will be able to obtain insurance coverage through multiple sources.

Expanding Coverage Under the Affordable Care Act



* Medicaid also includes other public programs: CHIP, other state programs, Medicare and military-related coverage. The federal poverty level for a family of three in 2012 is \$19,090. Numbers may not add to 100 due to rounding.
 SOURCE: KCMU/Urban Institute analysis of 2011 ASEC Supplement to the CPS.



**What does this mean for behavioral
health?**



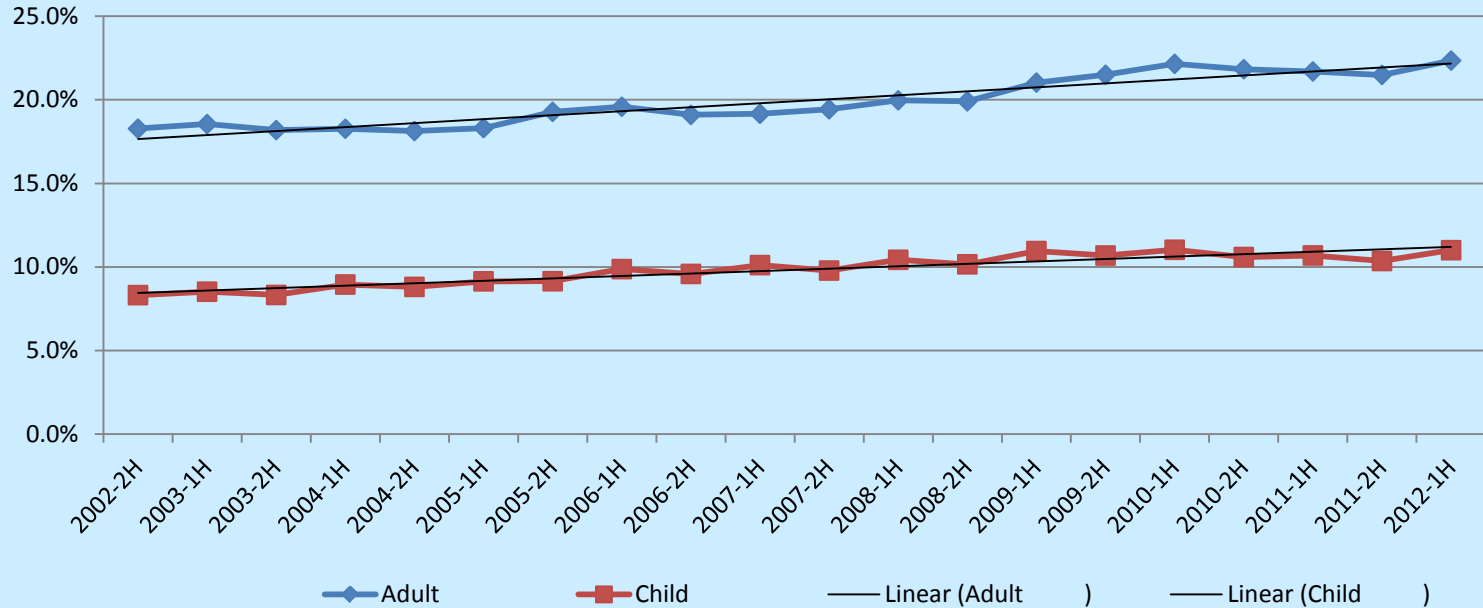
ACCESS = FINANCIAL ISSUES

**Who will have access to insurance?
What services & supports will be covered?**

ACCESS AMONG MEDICAID POPULATION IN PHILADELPHIA



Penetration Rate by Adult and Children

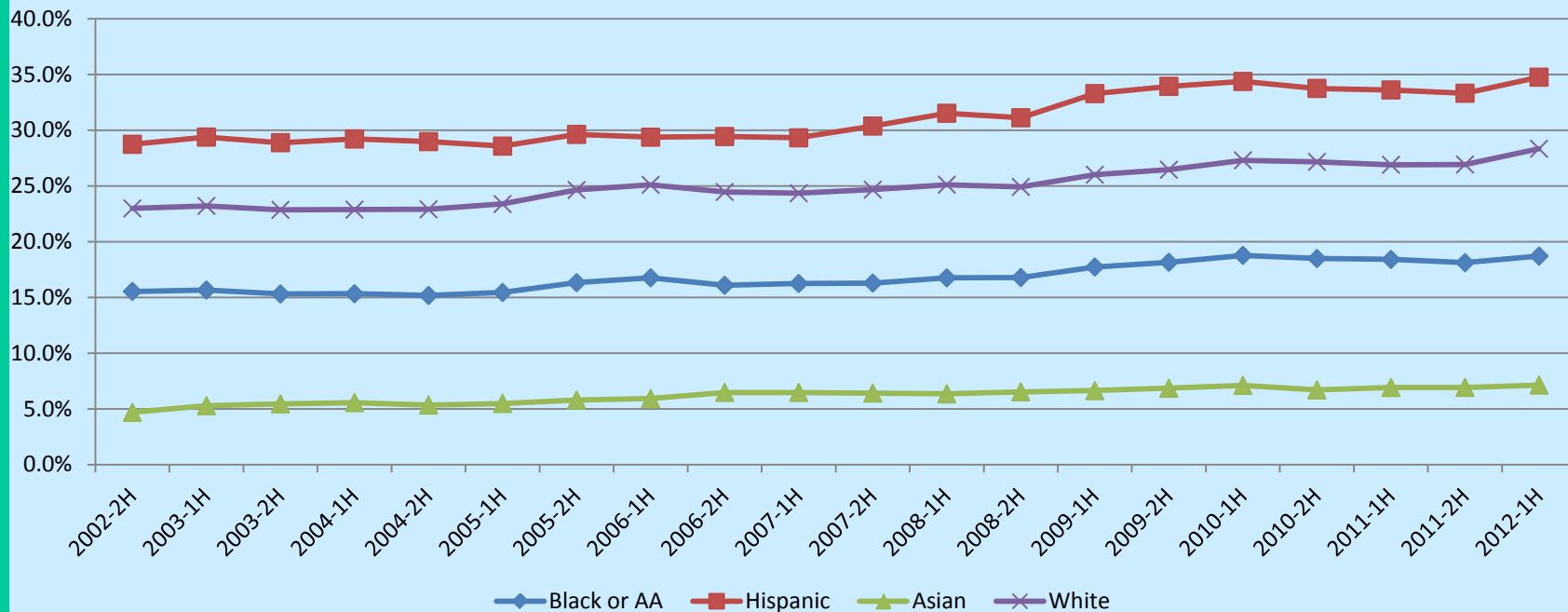


02/01/2013

A CLOSER LOOK BY RACE AND ETHNICITY



Adult Utilization Rates



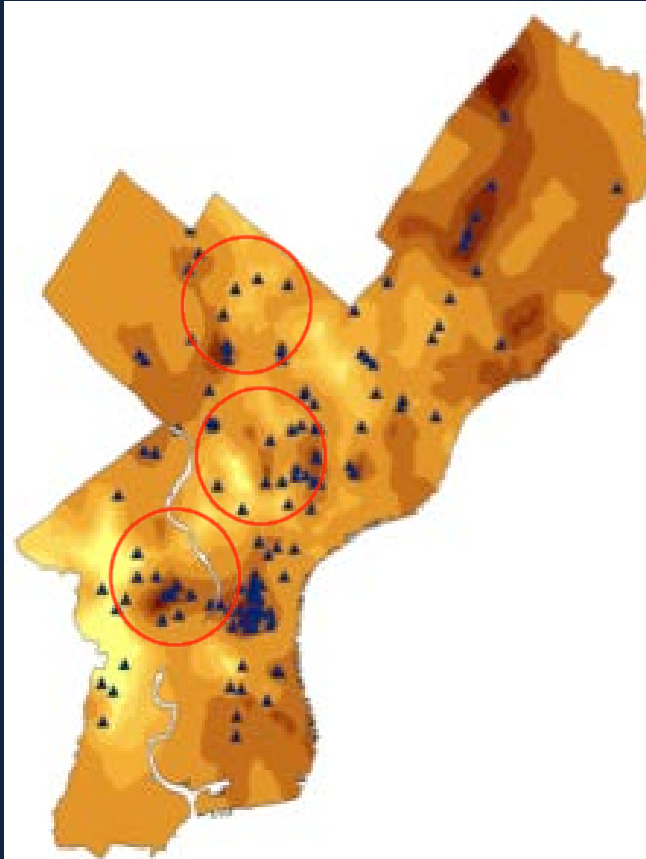
Data prepared as of 02/01/2013



Access = Service Delivery

Where and how will services be delivered?

Where Are Services Available in Philadelphia?



Access = Psychological Access

Will people be willing to seek, go to, and stay in services?





MEXICAN POST
Restaurant & Bar

MARBLE

Happiness

HONOR GUARD
EACH CELEBRATING 10+ YEARS OF RECOVERY

DRUG & ALCOHOL REHABILITATION
215-922-8890

PRO-ACT RECOVERY WALKS! 2013



PRO-ACT Recovery Walks 2013
Celebrating 10+ Years of Recovery
Pittsburgh, PA

What does this mean?

- > Access is a multidimensional construct
- > Financing is a HUGE piece of this, but there are structural/service delivery and psychological components that must be addressed

DBHIDS Practice Guidelines for Treatment Providers

- www.dbhids.org/assets/Forms--Documents/transformation/PracticeGuidelines.pdf

Additional Resources

- www.dbhids.org
- www.dbhids.org/technical-papers-on-recovery-transformation
- www.williamwhitepapers.com

Stay Connected



Like DBHIDS on Facebook: facebook.com/DBHIDS



Follow DBHIDS on Twitter: [@PhillyRecovery](https://twitter.com/PhillyRecovery)

Follow me on Twitter: [@ArthurCEvans](https://twitter.com/ArthurCEvans)

THANK YOU



Arthur C. Evans, Ph.D.
arthur.c.evans@phila.gov
@ArthurCEvans

CITY of PHILADELPHIA
DBHIDS
DEPARTMENT of BEHAVIORAL HEALTH
and INTELLECTUAL disABILITY SERVICES
Recovery • Resilience • Self-Determination