



aspire

School-based Behavioral Health:

Boots to the Ground



Aspire Behavioral Health and Developmental Disabilities Overview

- ◆ Aspire Behavioral Health and Developmental Disability is a public, non-profit organization in Albany, Georgia.
- ◆ Aspire provides mental health, addictive disease, and developmental disability services in an 8 county catchment area, with specialty services provided to a total of 17 counties.
- ◆ Aspire has been the recipient of the Georgia Apex Program funding each year since the Georgia Department of Behavioral Health and Developmental Disabilities (DBHDD) launched the initiative in 2015.



Demographic Snapshot



-	POPULATION	73,179
-	AFRICAN AMERICAN/ CAUCASIAN	72.6%/23.5%
-	MOST DANGEROUS CITY RANKING	7TH
-	POVERTY RATE	33.2%
-	UNEMPLOYMENT RATE	16.8%
-	HIGH SCHOOL GRADUATION RATE	86.1%

***RURAL COMMUNITIES, LACK OF PUBLIC TRANSPORTATION, AND INCREASING RATES OF HOMELESSNESS ARE AMONG THE FACTORS THAT ALSO IMPACT OUR AREA**

HOW TO BECOME ELIGIBLE



Targeted schools are selected based on factors including but not limited to:

- Title 1 Status
 - Attendance Data
 - CCRPI Scores
 - PBIS Status
 - School Climate Star Rating
 - Needs Assessment
 - Presentation of Findings
 - MOU Obtained
 - 4 School Expansion
-



HOW IT WORKS



- Referrals are streamlined through school counselor
 - Only verbal consent needed
 - Referrals are submitted electronically
youthreferrals@albanycsb.org
 - Aspire immediately schedules the initial assessment on campus
 - Releases of Information/Apex Consents are obtained
 - Individualized school-based services begin during nonacademic times
-



Apex 3 Tiered Services

Universal Prevention

Annual Children's Mental Health Awareness Events
The Hope Project Mental Health Alliance
Mental Health Classroom Guidance
Compassion Games Climate Change Project
Beyond Differences Campaign
PBIS Sponsorships and Team Memberships
Parent and Teacher Workshops/Lunch and Learns
School-wide and System-wide Trainings

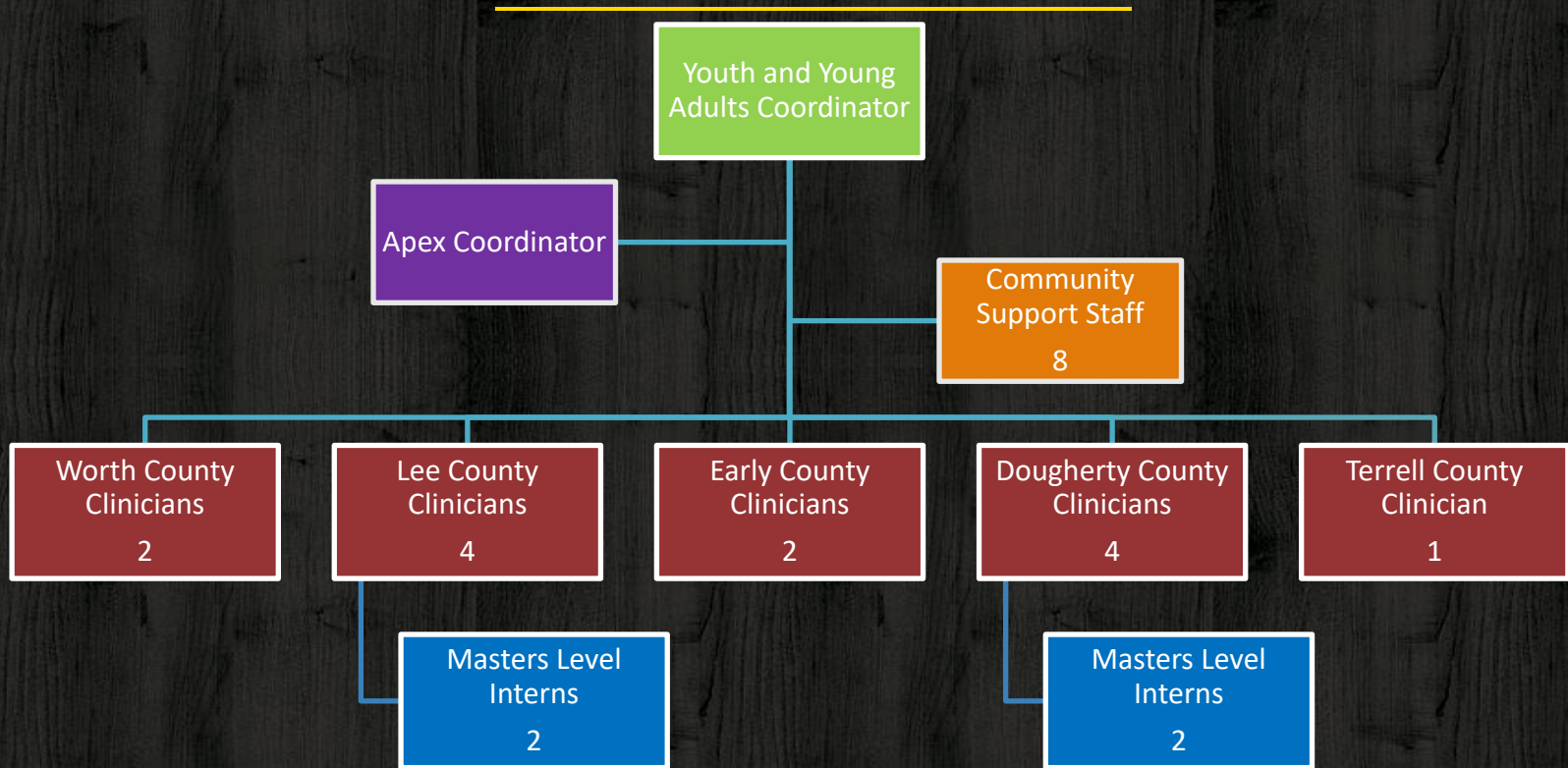
Early Intervention

Small groups for Apex and at-risk youth
Referrals to other Aspire programs (Clubhouse, Emerging Adults)
504/IEP/RTI Consultations

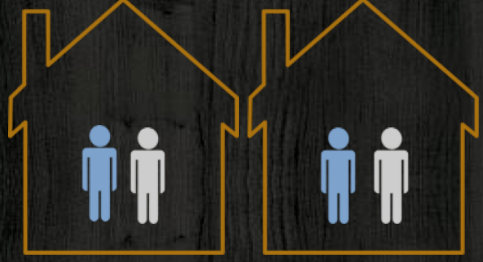
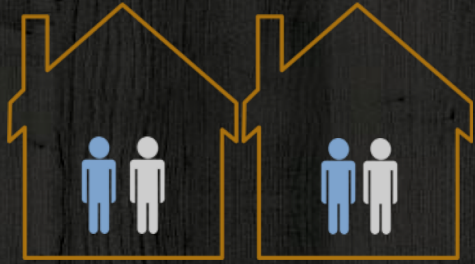
Intensive
Intervention

Direct Apex School-Based Services
School and Community-based Crisis Response Protocol
Camp Apex Summer Program

Apex Organization Chart



Apex Program Structure



Worth County

Dougherty County



Terrell County

Early County

Lee County

Challenges Identified

Low enrollment rate in higher grade level schools

Solution recommendation: Bridge communication/knowledge gaps through regular meetings with teachers/staff and regularly attend public school board meetings

Solution recommendation: Apply for the Apex 3.0 Statement of Need specifically for high schools when released

Lack of mental health awareness/reducing stigma in school curriculum

Solution recommendation: Continue Hope Project Meetings, community trainings, and education i.e. 5k fun run/Art Fest/Recovery Project Art Show/media campaign/mental health classroom guidance/mental health awareness week involving all school and community partners

Secondary Trauma for Teachers

Solution recommendation: Continue regular lunch and learns, workshops, and trainings for teachers that include trauma informed care for staff, students, and overall classroom environment

SBBH Provider Self-Care

Solution recommendation: Continue staff in-service trainings that include professional boundaries, policy and procedures, Code of Ethics

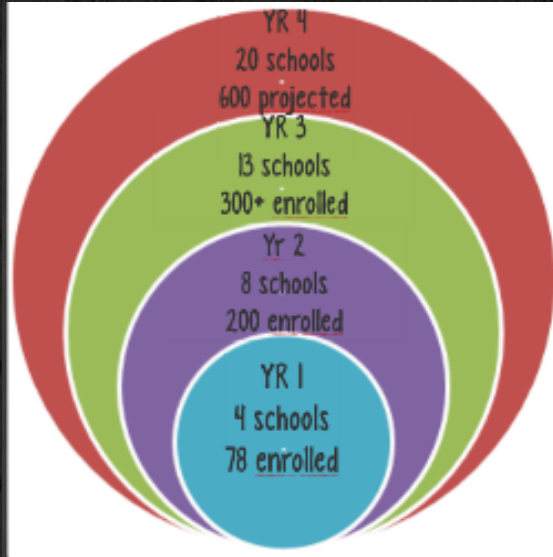


Impact of APEX

LIVE. LOVE. LEARN. LEAD.

- ◆ 100% Systems Absorption
- ◆ Summer Program
- ◆ Mental Health Alliance
- ◆ Trainings
- ◆ PBIS Involvement
- ◆ School Climate Projects
- ◆ Community Crisis Protocol
- ◆ Community Investment

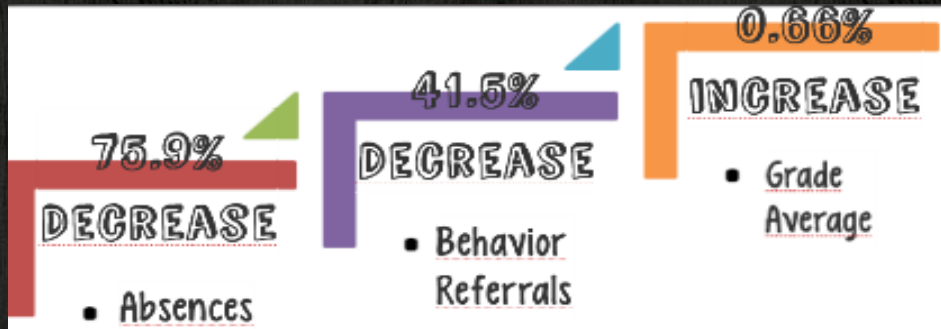
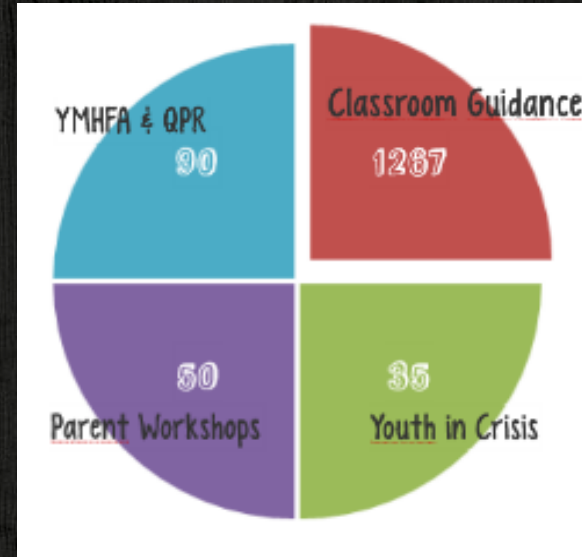
Number Served



FY18 Programmatic Outcomes

Program Progress Made

1442 Youth Stakeholders Trained





Be the
CHANGE
you want to
see in the
WORLD!



aspire to shine

APEX
LIVE. LOVE. LEARN. LEAD.

